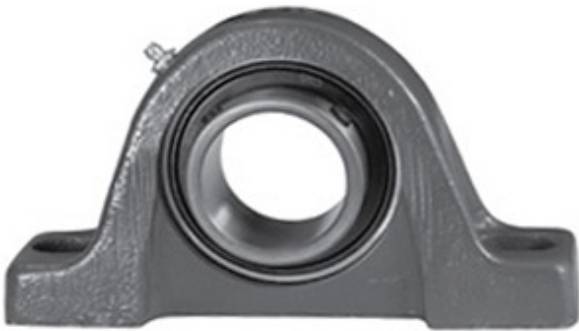




# NTA BEARING PRECISION AXLE CORP.

1.188 Inch | 30.175 Millimeter x 1.344 Inch |  
34.13 Millimeter x 1.688 Inch | 42.875 Millimeter  
LINK BELT P3S219MHFF Pillow Block Bearings



Bearing No. P3S219MHFF

P3S219MHFF Bearing 2D drawings and 3D CAD models

Category	Pillow Block Bearings
Inventory	0.0
Manufacturer Name	REXNORD
Minimum Buy Quantity	N/A
Weight	0.454
EAN	0793699552287
Product Group	M06110
Number of Mounting Holes	2
Mounting Method	Set Screw
Housing Style	2 Bolt Pillow Block
Rolling Element	Ball Bearing
Housing Material	Cast Iron
Expansion / Non-expansion	Non-expansion
Mounting Bolts	1/2 Inch
Relubricatable	Yes
Insert Part Number	MB251-316-MHFFPA
Seals	Free Running MHFF
Housing Configuration	1 Piece Solid
Inch - Metric	Inch
Other Features	Single Row   Standard Duty   10% Grease Fill   Flingers Only
Long Description	2 Bolt Pillow Block; 1-3/16" Bore; 1-11/16" Base to Center Height; Set Screw Mount; Ball Bearing; 4-1/8"



## NTA BEARING PRECISION AXLE CORP.

	Minimum Bolt Spacing; 5-1/8" Bolt Spacing Maximum; Relubricatable; Cast Iro
Category	Pillow Block
UNSPSC	31171511
Harmonized Tariff Code	8483.20.40.40
Noun	Bearing
Keyword String	Pillow Block
Manufacturer URL	<a href="http://www.rexnord.com">http://www.rexnord.com</a>
Manufacturer Item Number	C251-316-MHFF
Manufacturer Internal Number	0155228
Weight / LBS	2.42
Nominal Bolt Center to Center	4.8 Inch   121 Millimeter
d	1.188 Inch   30.175 Millimeter
D	1.344 Inch   34.13 Millimeter
Bolt Spacing Minimum	4.125 Inch   104.775Millimeter
B	1.688 Inch   42.875 Millimeter
Bolt Spacing Maximum	5.125 Inch   130.175Millimeter
Actual Bolt Center to Center	0 Inch   0Millimeter