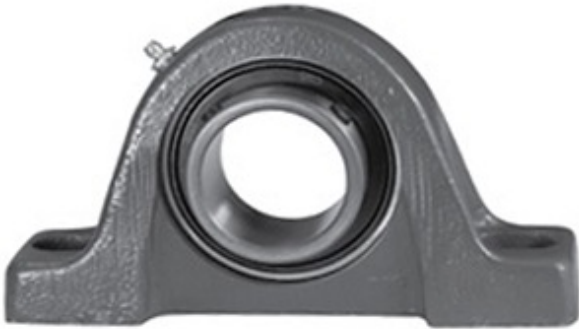




# NTA BEARING PRECISION AXLE CORP.

1.938 Inch | 49.225 Millimeter x 1.813 Inch |  
46.05 Millimeter x 2.25 Inch | 57.15 Millimeter  
LINK BELT P3S231E1 Pillow Block Bearings



Bearing No. P3S231E1

P3S231E1 Bearing 2D drawings and 3D CAD models

|                           |  |
|---------------------------|--|
| Category                  | Pillow Block Bearings  |
| Inventory                 | 0.0  |
| Manufacturer Name         | REXNORD  |
| Minimum Buy Quantity      | N/A  |
| Weight                    | 2.81   |
| EAN                       | 0793699307566  |
| Product Group             | M06110   |
| Number of Mounting Holes  | 2  |
| Mounting Method           | Set Screw  |
| Housing Style             | 2 Bolt Pillow Block  |
| Rolling Element           | Ball Bearing   |
| Housing Material          | Cast Iron  |
| Expansion / Non-expansion | Non-expansion  |
| Mounting Bolts            | 5/8 Inch   |
| Relubricatable            | Yes  |
| Insert Part Number        | MB251-1516-E1PA  |
| Seals                     | Viton  |
| Housing Configuration     | 1 Piece Solid  |
| Inch - Metric             | Inch   |
| Other Features            | Single Row   Standard Duty<br>  Has Flinger  |
| Long Description          | 2 Bolt Pillow Block;<br>1-15/16" Bore; 2-1/4" Base<br>to Center Height; Set Screw<br>Mount; Ball Bearing;<br>5-27/32" Minimum Bolt |



## NTA BEARING PRECISION AXLE CORP.

|                               |  |
|-------------------------------|--|
|                               | Spacing; 6-27/32" Bolt Spacing Maximum; Relubricatable; Cast |
| Category                      | Pillow Block   |
| UNSPSC                        | 31171511   |
| Harmonized Tariff Code        | 8483.20.40.40  |
| Noun                          | Bearing  |
| Keyword String                | Pillow Block   |
| Manufacturer URL              | <a href="http://www.rexnord.com">http://www.rexnord.com</a>  |
| Manufacturer Item Number      | C251-1516-E1   |
| Manufacturer Internal Number  | 0130756  |
| Weight / LBS                  | 6.19   |
| d                             | 1.938 Inch   49.225 Millimeter                               |
| Nominal Bolt Center to Center | 6.3 Inch   160 Millimeter                                    |
| Actual Bolt Center to Center  | 0 Inch   0 Millimeter  |
| D                             | 1.813 Inch   46.05 Millimeter                                |
| Bolt Spacing Minimum          | 5.844 Inch   148.438 Millimeter                              |
| B                             | 2.25 Inch   57.15 Millimeter                                 |
| Bolt Spacing Maximum          | 6.844 Inch   173.838 Millimeter                              |