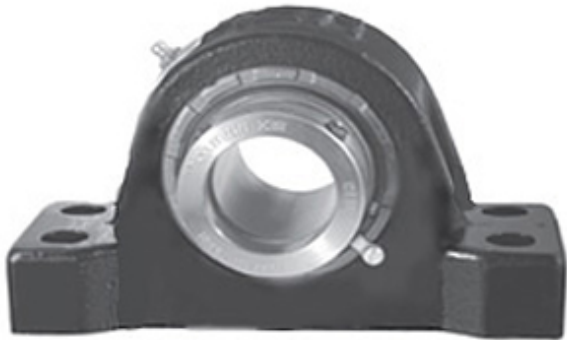




NTA BEARING PRECISION AXLE CORP.

1.938 Inch | 49.225 Millimeter x 3.281 Inch |
83.337 Millimeter x 2.25 Inch | 57.15 Millimeter
REXNORD MA3115F Pillow Block Bearings



Bearing No. MA3115F

MA3115F Bearing 2D drawings and 3D CAD models

Category	Pillow Block Bearings
Inventory	0.0
Manufacturer Name	REXNORD
Minimum Buy Quantity	N/A
Weight	5.312
EAN	0698210909734
Product Group	M06288
Number of Mounting Holes	4
Mounting Method	Eccentric Collar
Housing Style	4 Bolt Pillow Block
Rolling Element	Spherical Roller Bearing
Housing Material	Cast Iron
Expansion / Non-expansion	Non-expansion
Mounting Bolts	1/2 Inch
Relubricatable	Yes
Insert Part Number	3115U
Seals	Heavy Contact
Housing Configuration	1 Piece Solid
Inch - Metric	Inch
Other Features	Double Row
Long Description	4 Bolt Pillow Block; 1-15/16" Bore; 2-1/4" Base to Center Height; Eccentric Collar Mount; Spherical Roller Bearing; Relubricatable; Cast Iron;



NTA BEARING PRECISION AXLE CORP.

	Heavy Contact; Non-expansion
Category	Pillow Block
UNSPSC	31171511
Harmonized Tariff Code	8483.20.40.80
Noun	Bearing
Keyword String	Pillow Block
Manufacturer URL	http://www.rexnord.com
Manufacturer Item Number	MA3115F
Manufacturer Internal Number	6890973
Weight / LBS	13.4
Actual Bolt Center to Center	6.3 Inch 159Millimeter
Bolt Spacing Minimum	0 Inch 0Millimeter
D	3.281 Inch 83.337 Millimeter
Bolt Spacing Maximum	0 Inch 0Millimeter
d	1.938 Inch 49.225 Millimeter
B	2.25 Inch 57.15 Millimeter
Nominal Bolt Center to Center	6.3 Inch 160 Millimeter