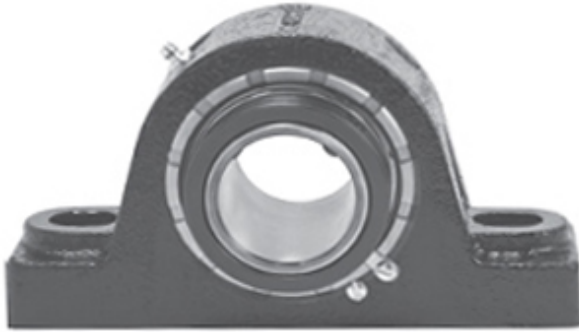




# NTA BEARING PRECISION AXLE CORP.

1.938 Inch | 49.225 Millimeter x 3.813 Inch |  
96.84 Millimeter x 2.25 Inch | 57.15 Millimeter  
REXNORD MA5115 Pillow Block Bearings



Bearing No. MA5115

MA5115 Bearing 2D drawings and 3D CAD models

Category	Pillow Block Bearings
Inventory	0.0
Manufacturer Name	REXNORD
Minimum Buy Quantity	N/A
Weight	4.722
EAN	0793699291773
Product Group	M06288
Number of Mounting Holes	2
Mounting Method	Concentric Collar
Housing Style	2 Bolt Pillow Block
Rolling Element	Spherical Roller Bearing
Housing Material	Cast Iron
Expansion / Non-expansion	Non-expansion
Mounting Bolts	5/8 Inch
Relubricatable	Yes
Insert Part Number	5115U
Seals	Heavy Contact
Housing Configuration	1 Piece Solid
Inch - Metric	Inch
Other Features	Double Row   Double Collar   With Set Screw
Long Description	2 Bolt Pillow Block; 1-15/16" Bore; 2-1/4" Base to Center Height; Concentric Collar Mount; Spherical Roller Bearing;



## NTA BEARING PRECISION AXLE CORP.

	Relubricatable; Cast Iron; Heavy Contact; Non- expansion
Category	Pillow Block
UNSPSC	31171511
Harmonized Tariff Code	8483.20.40.80
Noun	Bearing
Keyword String	Pillow Block
Manufacturer URL	<a href="http://www.rexnord.com">http://www.rexnord.com</a>
Manufacturer Item Number	MA5115
Manufacturer Internal Number	6829177
Weight / LBS	11.5
Nominal Bolt Center to Center	6.3 Inch   160 Millimeter
Bolt Spacing Maximum	0 Inch   0Millimeter
B	2.25 Inch   57.15 Millimeter
Bolt Spacing Minimum	0 Inch   0Millimeter
D	3.813 Inch   96.84 Millimeter
Actual Bolt Center to Center	6.3 Inch   159Millimeter
d	1.938 Inch   49.225 Millimeter