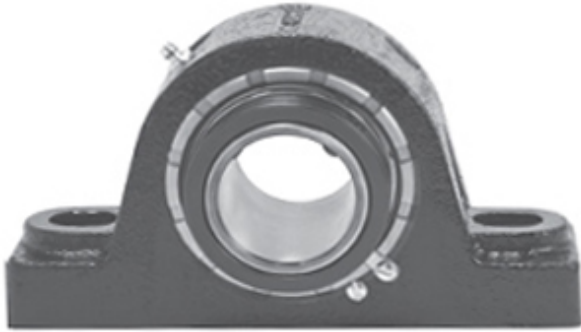




NTA BEARING PRECISION AXLE CORP.

2.938 Inch | 74.625 Millimeter x 4.875 Inch |
123.83 Millimeter x 3.25 Inch | 82.55 Millimeter
REXNORD MA5215G06 Pillow Block Bearings



Bearing No. MA5215G06

MA5215G06 Bearing 2D drawings and 3D CAD models

Category	Pillow Block Bearings
Inventory	0.0
Manufacturer Name	REXNORD
Minimum Buy Quantity	N/A
Weight	12.94
EAN	0793699275292
Product Group	M06288
Number of Mounting Holes	2
Mounting Method	Concentric Collar
Housing Style	2 Bolt Pillow Block
Rolling Element	Spherical Roller Bearing
Housing Material	Cast Iron
Expansion / Non-expansion	Non-expansion
Mounting Bolts	3/4 Inch
Relubricatable	Yes
Insert Part Number	5215U
Seals	Heavy Contact
Housing Configuration	1 Piece Solid
Inch - Metric	Inch
Other Features	Double Row Heavy Duty Double Collar Face Locked Threaded Cover With Set Screw
Long Description	2 Bolt Pillow Block; 2-15/16" Bore; 3-1/4" Base to Center Height;



NTA BEARING PRECISION AXLE CORP.

	Concentric Collar Mount; Spherical Roller Bearing; Relubricatable; Cast Iron; Heavy Contact; Non- expansion
Category	Pillow Block
UNSPSC	31171511
Harmonized Tariff Code	8483.20.40.80
Noun	Bearing
Keyword String	Pillow Block
Manufacturer URL	http://www.rexnord.com
Manufacturer Item Number	MA5215G06
Manufacturer Internal Number	127529
Weight / LBS	28.5
Bolt Spacing Minimum	0 Inch 0Millimeter
D	4.875 Inch 123.83 Millimeter
Actual Bolt Center to Center	8.1 Inch 206Millimeter
B	3.25 Inch 82.55 Millimeter
d	2.938 Inch 74.625 Millimeter
Bolt Spacing Maximum	0 Inch 0Millimeter
Nominal Bolt Center to Center	8.1 Inch 206.4 Millimeter