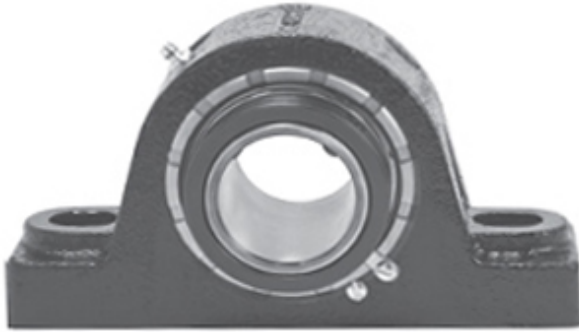




# NTA BEARING PRECISION AXLE CORP.

3.438 Inch | 87.325 Millimeter x 5.313 Inch |  
134.95 Millimeter x 3.75 Inch | 95.25 Millimeter  
REXNORD MA530766 Pillow Block Bearings



Bearing No. MA530766

MA530766 Bearing 2D drawings and 3D CAD models

Category	Pillow Block Bearings
Inventory	0.0
Manufacturer Name	REXNORD
Minimum Buy Quantity	N/A
Weight	19.3
EAN	0698210895051
Product Group	M06288
Number of Mounting Holes	2
Mounting Method	Concentric Collar
Housing Style	2 Bolt Pillow Block
Rolling Element	Spherical Roller Bearing
Housing Material	Cast Iron
Expansion / Non-expansion	Non-expansion
Mounting Bolts	7/8 Inch
Relubricatable	Yes
Insert Part Number	5307U
Seals	Heavy Contact
Housing Configuration	1 Piece Solid
Inch - Metric	Inch
Other Features	Double Row   Double Collar   With Set Screw
Long Description	2 Bolt Pillow Block; 3-7/16" Bore; 3-3/4" Base to Center Height; Concentric Collar Mount; Spherical Roller Bearing; Relubricatable;



## NTA BEARING PRECISION AXLE CORP.

	Cast Iron; Heavy Contact; Non-expansion
Category	Pillow Block
UNSPSC	31171511
Harmonized Tariff Code	8483.20.40.80
Noun	Bearing
Keyword String	Pillow Block
Manufacturer URL	<a href="http://www.rexnord.com">http://www.rexnord.com</a>
Manufacturer Item Number	MA530766
Manufacturer Internal Number	6889505
Weight / LBS	42.5
Nominal Bolt Center to Center	10 Inch   254 Millimeter
Bolt Spacing Maximum	0 Inch   0Millimeter
Actual Bolt Center to Center	10 Inch   254Millimeter
B	3.75 Inch   95.25 Millimeter
D	5.313 Inch   134.95 Millimeter
Bolt Spacing Minimum	0 Inch   0Millimeter
d	3.438 Inch   87.325 Millimeter