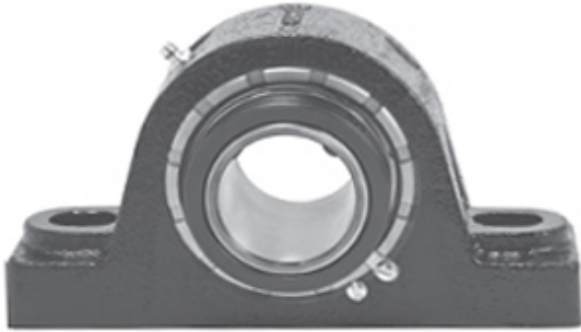




NTA BEARING PRECISION AXLE CORP.

3.438 Inch | 87.325 Millimeter x 5.313 Inch |
134.95 Millimeter x 3.75 Inch | 95.25 Millimeter
REXNORD MA530776 Pillow Block Bearings



Bearing No. MA530776

MA530776 Bearing 2D drawings and 3D CAD models

Category	Pillow Block Bearings
Inventory	0.0
Manufacturer Name	REXNORD
Minimum Buy Quantity	N/A
Weight	19.3
EAN	0698210009359
Product Group	M06288
Number of Mounting Holes	2
Mounting Method	Concentric Collar
Housing Style	2 Bolt Pillow Block
Rolling Element	Spherical Roller Bearing
Housing Material	Cast Iron
Expansion / Non-expansion	Non-expansion
Mounting Bolts	7/8 Inch
Relubricatable	Yes
Insert Part Number	5307U
Seals	Heavy Contact
Housing Configuration	1 Piece Solid
Inch - Metric	Inch
Other Features	Double Row Double Collar With Set Screw
Long Description	2 Bolt Pillow Block; 3-7/16" Bore; 3-3/4" Base to Center Height; Concentric Collar Mount; Spherical Roller Bearing; Relubricatable;



NTA BEARING PRECISION AXLE CORP.

	Cast Iron; Heavy Contact; Non-expansion
Category	Pillow Block
UNSPSC	31171511
Harmonized Tariff Code	8483.20.40.80
Noun	Bearing
Keyword String	Pillow Block
Manufacturer URL	http://www.rexnord.com
Manufacturer Item Number	MA530776
Manufacturer Internal Number	6800935
Weight / LBS	42.5
Bolt Spacing Minimum	0 Inch 0Millimeter
Bolt Spacing Maximum	0 Inch 0Millimeter
B	3.75 Inch 95.25 Millimeter
Nominal Bolt Center to Center	10 Inch 254 Millimeter
D	5.313 Inch 134.95 Millimeter
d	3.438 Inch 87.325 Millimeter
Actual Bolt Center to Center	10 Inch 254Millimeter